



U.S. Coast Guard Sector Mobile



Sector Commander
CAPT Ulysses Mullins

Chief of Prevention
CDR Dan Kilcullen

Chief of Inspections
LCDR Cristina Nelson

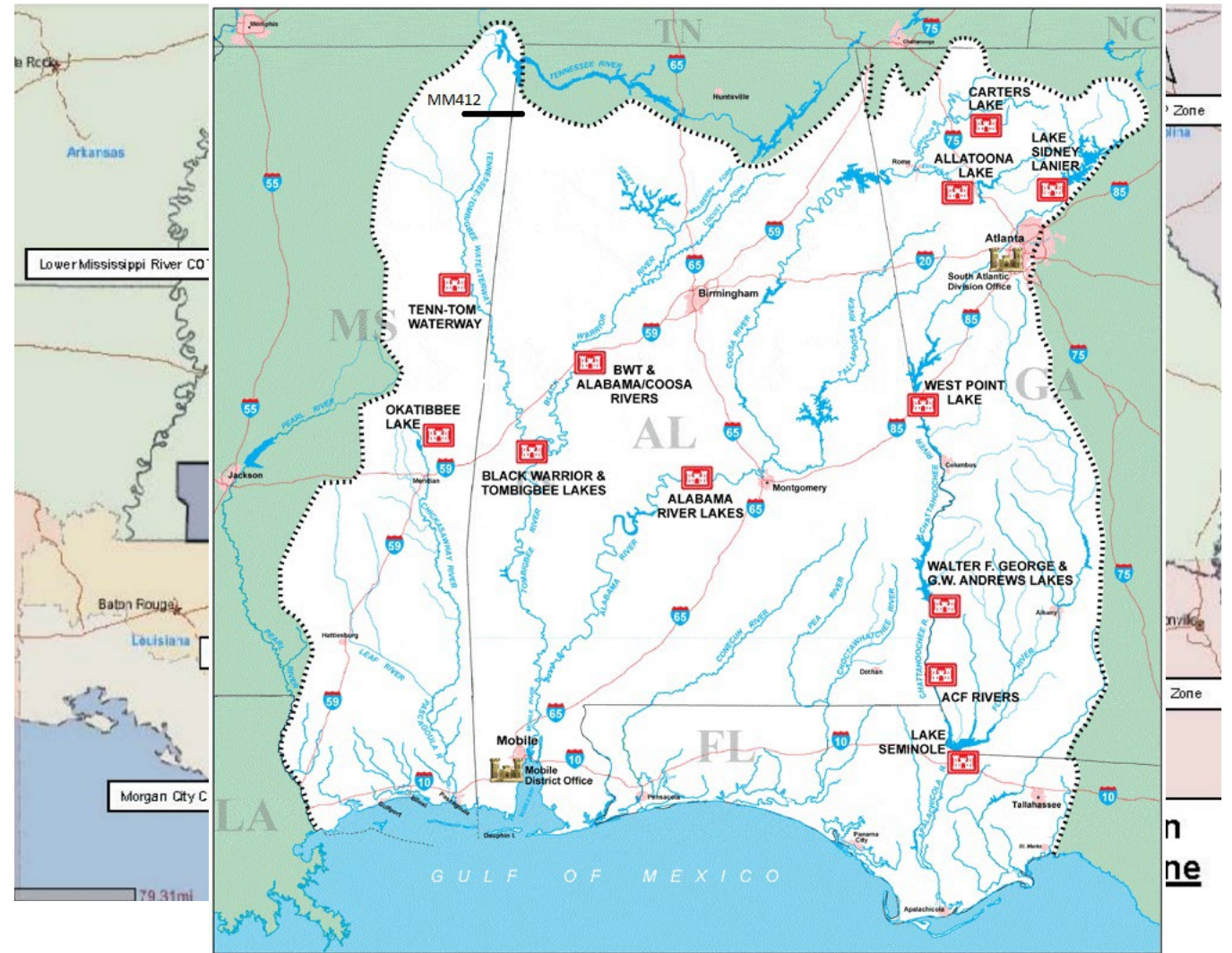
Chief of Waterways
LT Andy Anderson



Area of Responsibility

USCG Sector Mobile

- 5 Deepwater Ports, 2 Small Ports
- 1,450 River Miles south of the Tennessee Tombigbee Waterway
 - Mobile River
 - Alabama River
 - Tombigbee River
 - Black Warrior River
 - Tennessee-Tombigbee Waterway – MM 412
 - Coosa River (Including all lakes)
- 435 GICW Miles (40 – MM 376)





SPACE OPERATIONS ARE BOOMING

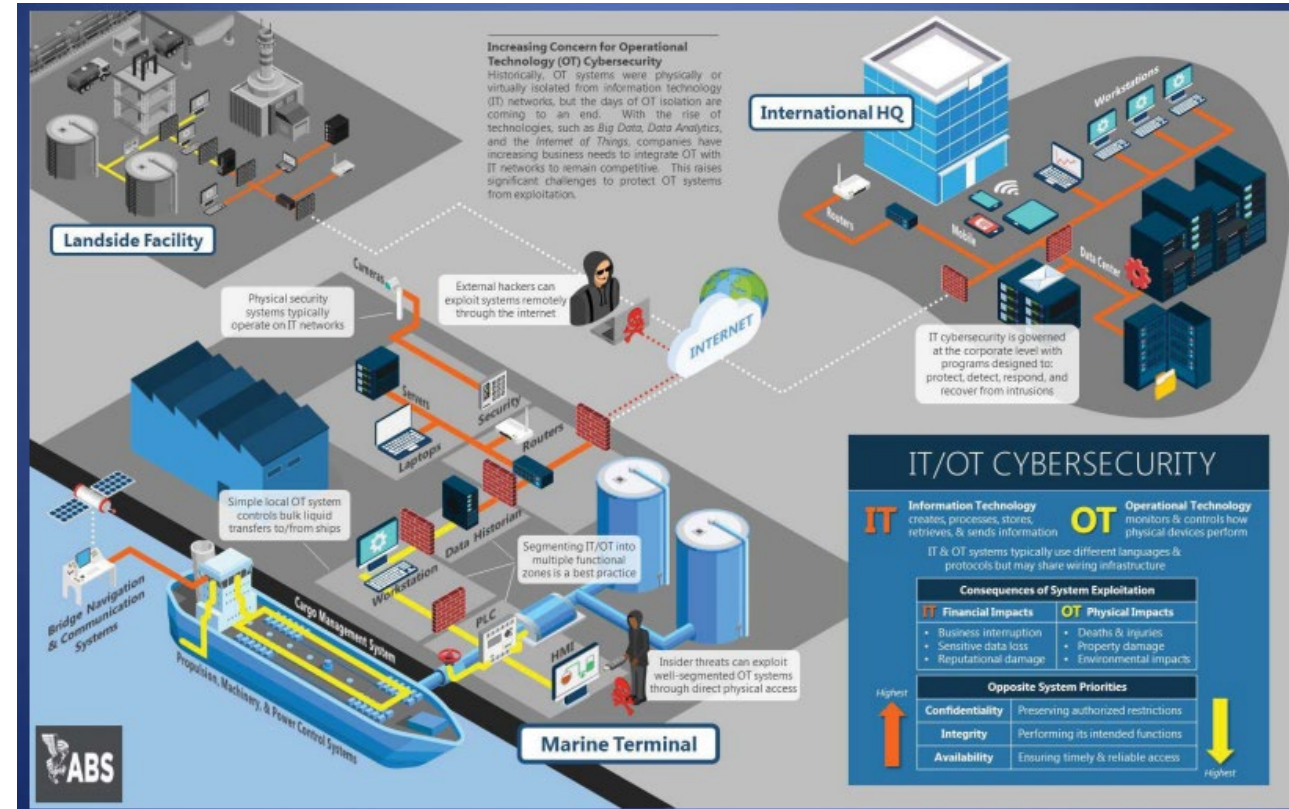


- Significant uptick of SPACE- OPS since 2021.
- Increasing demands of USCG asset time and personnel workload.
- Sector participated in multiple landings this year and has ensured waterway user awareness for recovery events.
- Sector Mobile is now establishing Safety zones for Capsule recovery, as authorized in the William M. (Mac) Thornberry National Defense Act of 2021.



Facility Cyber Security

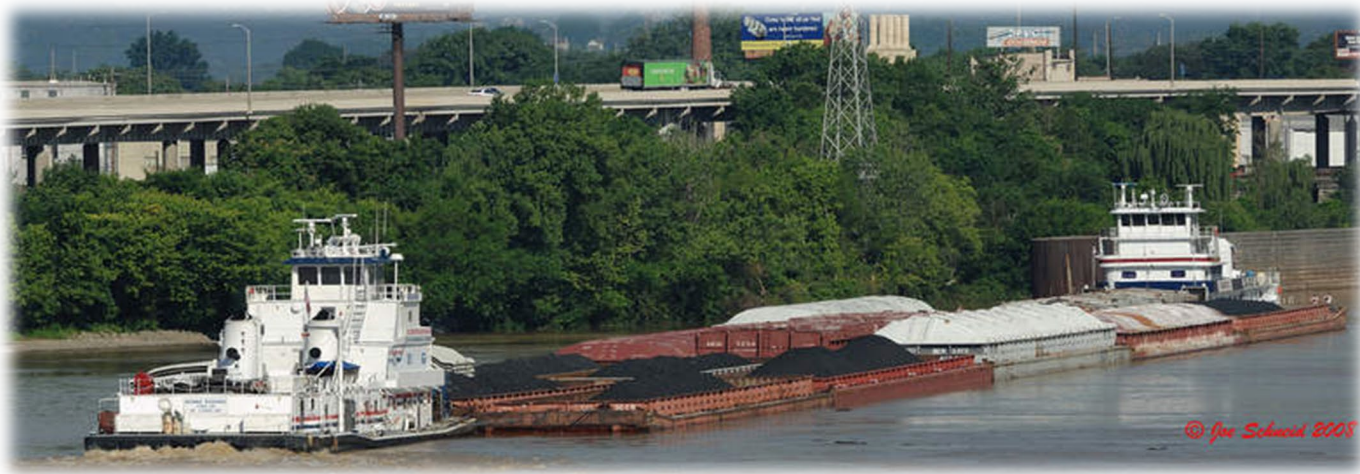
- 1 October 2022: Deadline for Amendment to Facility Security Plans to incorporate Cyber Security Requirements.
- Cyber Protection Team (CPT): 3 teams of active duty Coast Guard cybersecurity professionals trained and certified in delivering four core CPT services to the Marine Transportation System:
 - Assess, Hunt, Clear and Harden
- Cybersecurity Best Practices/toolbox:
<https://www.cisa.gov/shields-up>



Report facility, vessel, or other maritime platform cyber-attacks that result in Breach of Security or Transportation Security Incident to National Response Center:
(800) 282-0870



Subchapter “M” Compliance



- The deadline for all towing vessels to have a COI was July 19, 2022.
- Sector Mobile has successfully met this goal for our fleet of responsibility. We would like to Thank You for your proactive and professional approach to meet this deadline.

**THANK
YOU**

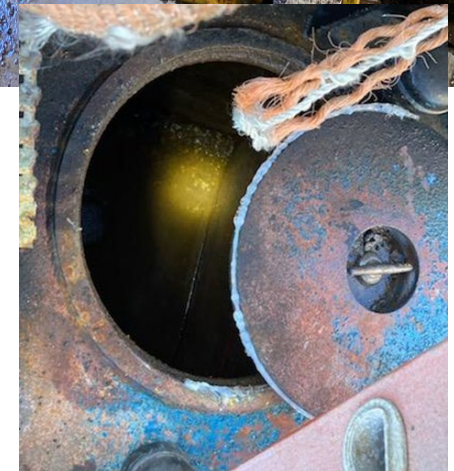
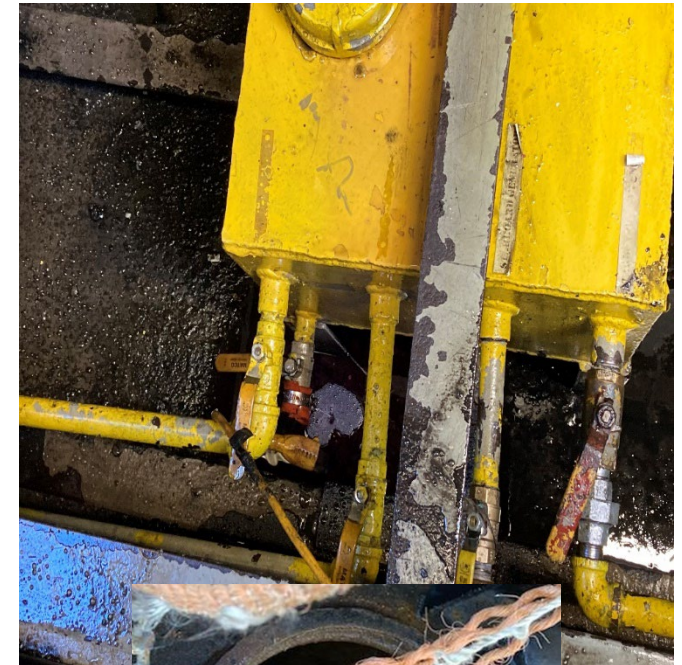
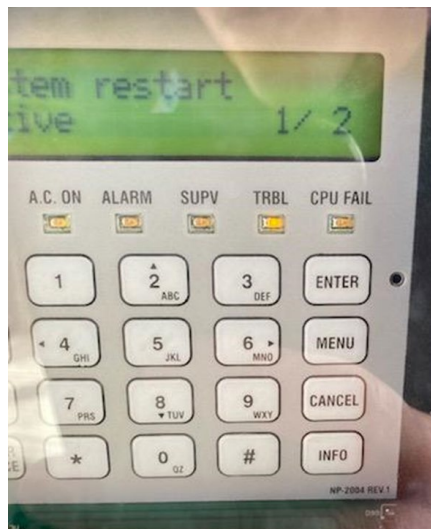


Subchapter “M” Compliance

TOP 5 INSP. DISCREPANCIES

1. Rudder Angle Indicators
2. Ballast Water Management
3. TPO marking Insp items N/A
4. Missing Bridge Alarms A/V.
5. Operating post marine casualty w/o USCG clearance.

****CVC & SECMOB are 100% aligned in terms of vessel compliance and enforcement actions to take**





Subchapter “M” Dry Docking

- **Coast Guard Option:** Must be scheduled with our inspection division and ensure the vessel is available to the Coast Guard for conducting examinations, as outlined in 46 CFR 137.300.
- **TSMS Option Notification (46 CFR 137.305)**
 - **External Survey Program** – No notification required to the Coast Guard as per 46 CFR 137.310. However, the OCMI can require additional oversight, in accordance with 46 CFR 137.317.
 - **Internal Survey Program** – Prior to commencing dry-docking or internal structural examinations, a notification must be made to the OCMI, in accordance with 46 CFR 137.315.



Coast Guard Office of Commercial Vessel Compliance (CG-CVC) has promulgated several policies, as highlighted below to audits, dry docks and TPO obligations. Pertinent information regarding these relevant policies, can be found on the Towing Vessel National Center of Expertise website: <http://www.dco.uscg.mil/tvncoe>.



Marine based Construction



Sector Mobile Waterways Management Division continues to track statuses of all active and ongoing marine based construction projects that are reported.

We ask that our industry partners continue to pass up information of known, ongoing projects to help us attain our goal of preventing infrastructure/property damage and pollution events that might be caused by construction equipment during severe weather.

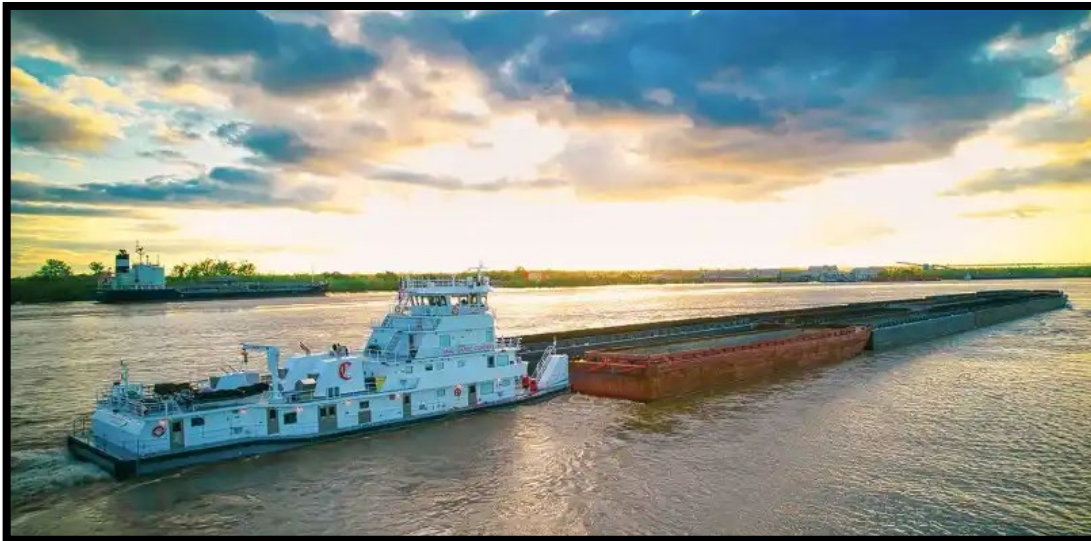
Contact: SectorMobileWaterways@uscg.mil





Waterways Communication Plan

- Committee driven plan consisting of Industry/Waterway Association, USCG, ACOE, and other agencies.
- Conference call- activated upon notification of any situation that has a potential to cause a negative impact on the safety of the inland river system including predictions of moderate and major flooding stages as forecasted by NWS.
- Feedback?





High Water / Severe Weather Contingency Plans and MSIB's



Marine Safety Information Bulletin



Commander (s)
U.S. Coast Guard
Sector Mobile
1500 15th Street
Mobile, AL 36615

MSIB Number: 04-22
Date: March 21, 2022
Contact: LT Andy Anderson
Phone: (251) 382-8653
E-Mail: Andrew.S.Anderson@uscg.mil



FORECASTED HIGHWATER RIVER CONDITIONS FOR CAPTAIN OF THE PORT MOBILE AREA OF OPERATIONS

Time: 11:00 / Date Monday, March 21, 2022

Due to a current forecast predicting heavy amounts of rainfall across the southern states, Sector Mobile reminds maritime community stakeholders to take appropriate risk mitigation steps to alleviate potential negative impacts caused by high water conditions currently predicted for the Tennessee-Tombigbee and Black Warrior Rivers. I urge all vessel operators, fleet area managers, and stakeholders to be cognizant of the challenges brought on by the dynamics of high river levels and increased currents.

Employing proactive risk management strategies, situational awareness, and contingency plans for these conditions will aid in mitigating and/or preventing the potential disruption of the maritime transportation system. Mariners should:

- Closely monitor river gauges (www.weather.gov/serfo/) and reports of dynamic river currents for safe navigation while departing, arriving, and transiting pools and river systems.
- Exercise caution, particularly during downstream approaches to locks and bridges. It is highly recommended that the most experienced operators/Vessel Masters make said approaches.
- Verify vertical clearances before transiting beneath bridges and overhead cable crossings.
- Be mindful of increased levels of debris brought on by high water and heavy winds.
- Recognize the risks involved and avoid "down-streaming" under high river conditions.

The Coast Guard encourages the maritime community to review the adequacy of mooring arrangements for barges and vessels, to review precautions to prevent breakaways, and to prepare contingency plans for responding to a breakaway. Owners and operators should ensure all mooring devices, wires, chains, lines, and connecting gear are of sufficient strength and in sufficient number to withstand forces that may be exerted on them by moored barges. In addition, operators should be mindful of the challenges of increased levels of debris, brought on by high water and heavy winds, can have on maintaining secure moorings.

For updates on lock closures visit:

www.sam.usace.army.mil/missions/civil-works/navigation/navigation-notice/

Properly positioned ATON (Aids to Navigation) plays a critical role in safe navigation. High water will affect ATON accuracy. Mariners who identify missing or off-station ATON should immediately contact Sector Mobile Command Center at (251) 441-6211. The Coast Guard is committed to working with maritime professionals to improve safety, maritime security, and environmental stewardship for all waterway users. For additional information concerning this Marine Safety Information Bulletin, please contact LT Andy Anderson at (251) 382-8653.

Marine Safety Information Bulletin



Commander (s)
U.S. Coast Guard
Sector Mobile
1500 15th Street
Mobile, AL 36615

MSIB Number: 07-22
Date: March 29, 2022
Contact: LT Andy Anderson
Phone: (251) 382-8653
E-Mail: Andrew.S.Anderson@uscg.mil



POTENTIAL FOR SEVERE WEATHER CONDITIONS 30 MARCH 2022 CAPTAIN OF THE PORT MOBILE AREA OF OPERATIONS

Time: 11:00 / Date Tuesday, March 29, 2022

The National Weather Service Mobile has issued a Severe Weather Threat, which warns of an increasing potential for a low-pressure storm system to bring high winds, tornadoes, hail, and heavy seas to portions of the area from Wednesday afternoon into the evening.

Commercial and recreational boaters are advised to keep a cautious eye on the weather forecast for their local area, and make all necessary preparations for possible heavy weather. Ensure adequate mooring arrangements have been made, especially in regards to the quantity and quality of mooring lines and bollards. Clear decks of any missile hazards, potential pollution hazards, and flammable materials. Mariners are reminded that movable bridges may not be operating with high-sustained winds.

Facilities are advised to review their heavy weather plans and take all necessary precautions to adequately prepare for the expected conditions.

For most up to date information regarding weather advisories, Mariners can tune in to VHF – CH 22A or visit the National Weather Service website @ [Mobile/Pensacola \(weather.gov\)](http://Mobile/Pensacola.weather.gov). For Coast Guard related emergencies, please contact Sector Mobile command center at two 251-441-6211.

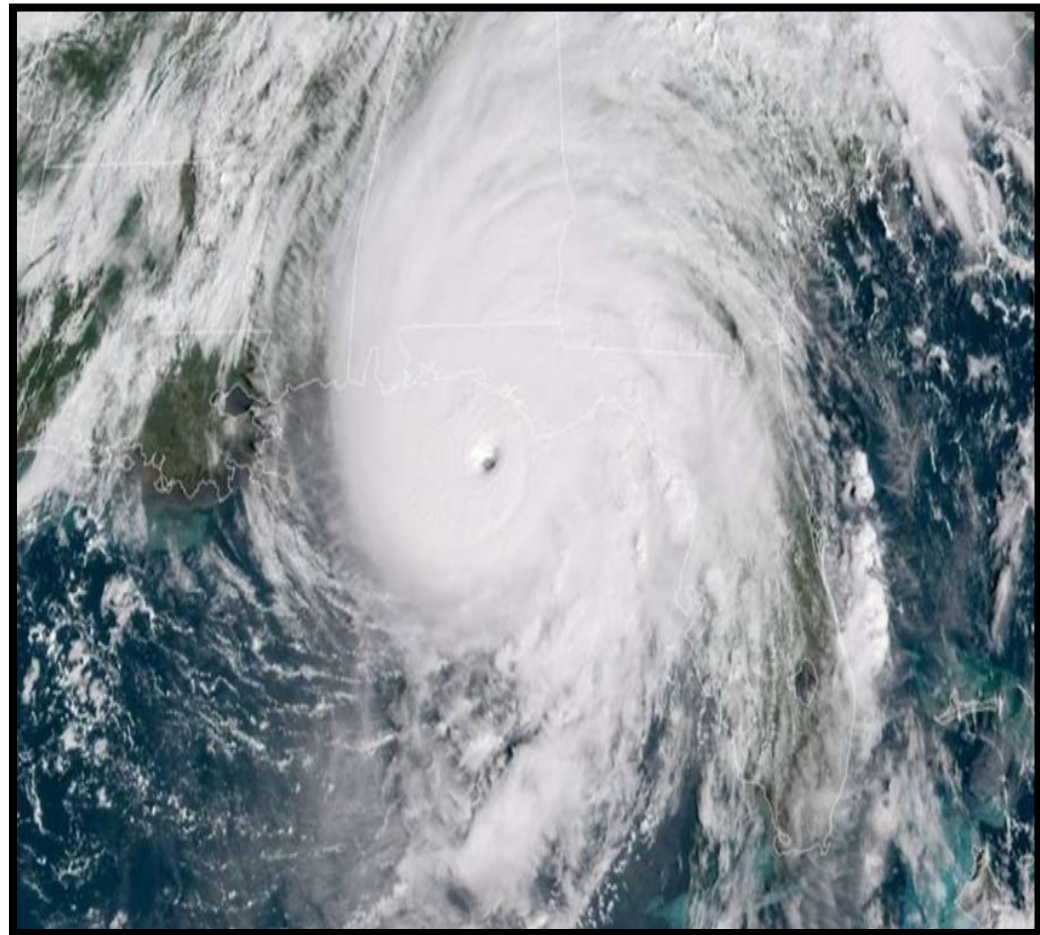
Feedback from the group?



Severe Weather Plan



- Plan posted on Homeport
- Provides detailed Preparation Checklists.
- Port Status posted
 - MSIB
 - Homeport
 - Email
- Review of changes:
 - Port Status Setting Details
 - Added a Modified Yankee status condition.
- Calls will now be on MS Teams:
 - +1 410-874-6742 ID: 195 943 512#





Severe Weather Contingency Plans



Port Status (**All ports go to Whiskey & X-RAY**)

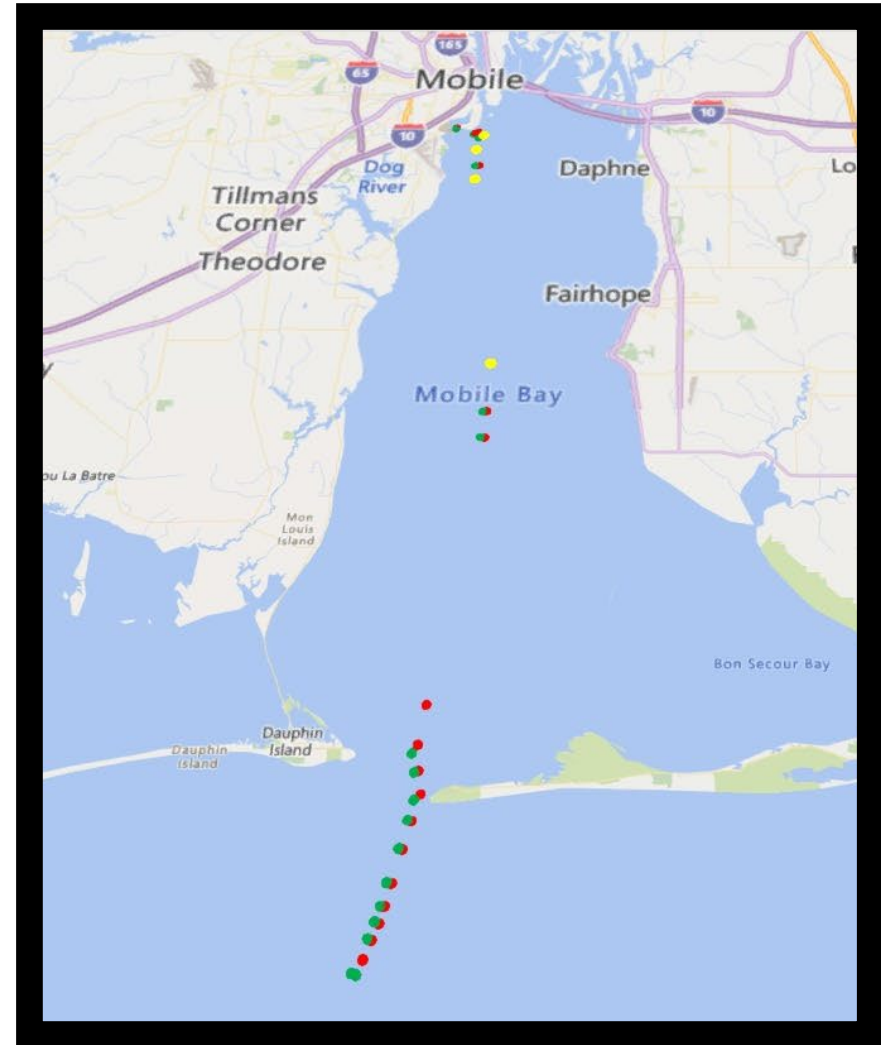
- **WHISKEY** (TSFW possible w/ 72hrs)
 - Plans to Depart or Remain in port for all oceangoing Commercial vessels & CG Regulated Barges over 300GT (Annex A – Remain in Port Checklist, Annex B – Storm Prep Checklist for vessels) all sent to Vessel arrivals: SecMobArrivals@uscg.mil If equipped, Activate AIS. Complete Storm Preparation Checklist for Waterfront Facilities (Annex C).
- **X-RAY** (TSFW possible w/ 48hrs)
 - Continue to report mooring/departure plans. Continue to prepare Facilities.
 - Notify USCG of any Hazardous/Dangerous Cargo that is unable to be stored or secured in time.
- **YANKEE** (**STSFW probable** w/ 24hrs)
 - Continue to report mooring/departure plans. Continue to prepare Facilities.
 - Ensure All vessels Remaining in-port are safely secured as per their respective mooring plans.
 - No movement of vessels allowed w/in the port unless departing immediately for storm avoidance.
- **YANKEE Modified** (**Low Probability of STSFW** w/ 24hrs)
 - **Contrary to standard YANKEE condition, modified allows movement within the port, including departures. No vessels may enter without COTP permission. This modified condition may remain in effect throughout the passing of a storm if ZULU weather conditions are not expected.**
 - **YANKEE Modified suspends bunkering and Lightering, cargo transfers (if winds are over 40mph sustained), and requires the disconnection of all transfer hoses and arms (if winds are over 50 mph sustained).**
- **ZULU** (**HFW probable** w/ 12hrs)
 - All movement shall stop until further notification from the USCG.
 - All shore-side facilities shall cease operations and cargo movement.



E-ATON




- Virtual contact broadcasted for critical Aids to Navigation.
- Selection of which Aids to activate is made carefully after conversing with Harbor pilots.
- Available for viewing on Electronic Charting Displays.
- Navigators suffer from too many aids as it clogs/overloads charts





BNM Subscription Service (RSS)






NAVIGATION CENTER

The Navigation Center of Excellence

U.S. Department of Homeland Security
UNITED STATES COAST GUARD



Home | LNMs | BNMs | Nav Rules | AIS Data Requests | AIS Overview | GPS Constellation | GPS Testing | GPS Almanacs | USCG Int'l Ice Patrol | Contact Us | Search

***** Important Note About a Change to Our Website ***** On 05 June 2022 NAVCEN will transition to a website with an all-new "look and feel". This upgrade is a large step in our goal to provide more useful, easier-to-access, and streamlined maritime safety data and information. In addition, the site will provide you with greater functionality across all platforms including mobile and desktop devices. For additional information, please follow this link: [NAVCEN Website Upgrade Information](#).

Local Notice to Mariners

- LNMs by CG District
- Daily LNM Discrep & Temp Chgs
- LNM Archives (zipped files)
- Report an ATON Discrepancy
- District Boundaries & Contact Information
- Chart Ordering Info
- Frequently Asked Questions
- Light Lists Corrections
- Weekly Light Lists (XML and PDF)
- Email Message Subscriptions (Free)

Maritime Safety Data

- Broadcast Notices to Mariners
- Daily LNM Discrep & Temp Chg File
 - Daily LNM File Description
- N. American Iceberg KML File
- Weekly Light Lists (XML and PDF)
- Request AIS Data

Nav Systems and Services

- Automatic Identification System
- Global Positioning System (Civil Support)
- Long Range Identification and Tracking
- LORAN C (archive)
- DGPS Discontinuance

Maritime Safety Information

- Local Notices to Mariners
- Light List Volumes (2022)

SUBSCRIBE TO NAVIGATION CENTER EMAIL SERVICES AND RSS FEEDS

On this page you may use the links in the table below (left hand side) to access the Coast Guard's enterprise public email delivery system called "Gov Delivery" to register to receive emails with the information as noted in the links. This is a free subscription service.

Additionally, on the right hand side of the table are the Navigation Center RSS (Really Simple Syndication) Feeds for various topics. These feeds update automatically and immediately when we publish information.

RSS feeds are data formats used to publish digital content, such as blogs, news, podcasts, or other information.


To view the information in an easy-to-read format, you have two options:

- Download and install on your computer, one of many "RSS news readers" and configure it to read our feeds. Use your favorite search engine to find these readers.
- Install an extension to your web browser, available free from your web browser's extension or add-on "web store".

Once you have a reader or reader extension installed, you can click on the RSS icon on the right-hand side of the table below and view updated information, or alternatively, you can set your reader to automatically update and inform you that there is new information available.

Subscribe to District Local Notices to Mariners (LNMs):

1st District Local Notices to Mariners	RSS
5th District Local Notices to Mariners	RSS
7th District Local Notices to Mariners	RSS
8th District (Gulf Coast) Local Notices to Mariners	RSS
8th District (Western Rivers) Local Notices to Mariners	RSS

 Print-friendly

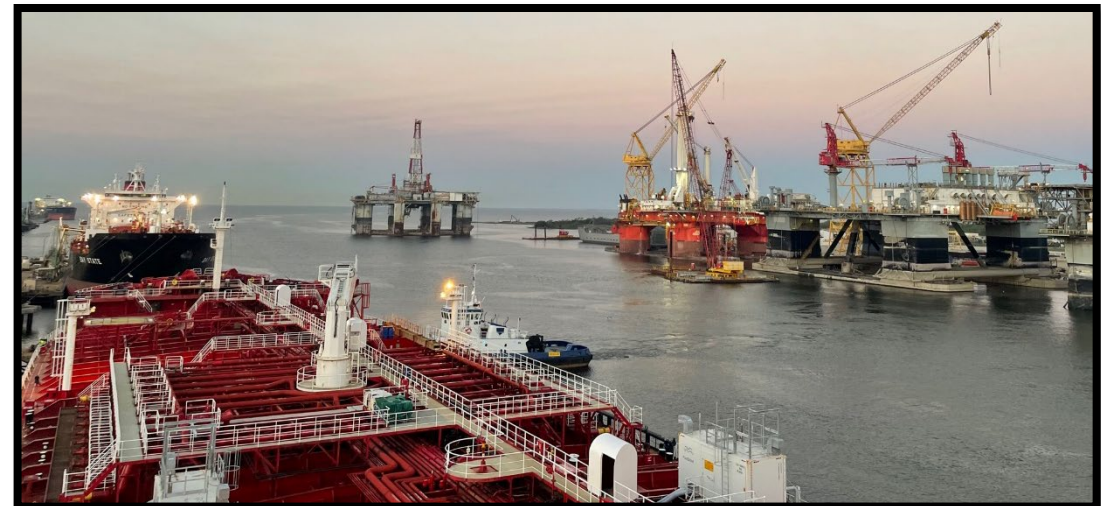
- Free to subscribe
- RSS Phone Application
- RSS Computer Application
- Instant updates, BNM's sent immediately upon their release direct to the user.
- [NAVCEN.USCG.GOV](https://navcen.uscg.gov)
- Request either email or RSS subscription.
- Now live!
- **Contact for questions:**
SectorMobileWaterways@uscg.mil



USCG Ride-Along/Ship-Rider



- Industry/Port Partners can request at any time.
- Waterway problems you would like us to see first hand?
- We will accommodate to the best of our ability.
- USCG seeking opportunity for Marine Inspector trainees to ride Towing Vessels.
- Coordinate with Chief of Waterways, LT Andy Anderson
 - Andrew.S.Anderson@uscg.mil





U.S. Coast Guard Sector Mobile



Sector Commander
CAPT Ulysses Mullins

Chief of Prevention
CDR Dan Kilcullen

Chief of Inspections
LCDR Cristina Nelson

Chief of Waterways
LT Andy Anderson