



TENNESSEE-TOMBIGBEE WATERWAY

22



16" DREDGE

Mobilization late Aug '22:

Problem Areas

- Mile 386.6: 47% blockage – 30,000 CY
- Mile 420: 40% blockage – 20,000 CY
- Mile 430.6: 50% blockage – 23,000 CY
- Mile 436.2: 60% blockage – 57,000 CY

Total CY: **130,000**



**CONTRACTOR – K-BELLE CONSULTANTS
DREDGE COASTAL ROSE (PHOTO)
NEW ORLEANS, LA**



Working Today to Build a Better Tomorrow



TENNESSEE-TOMBIGBEE WATERWAY

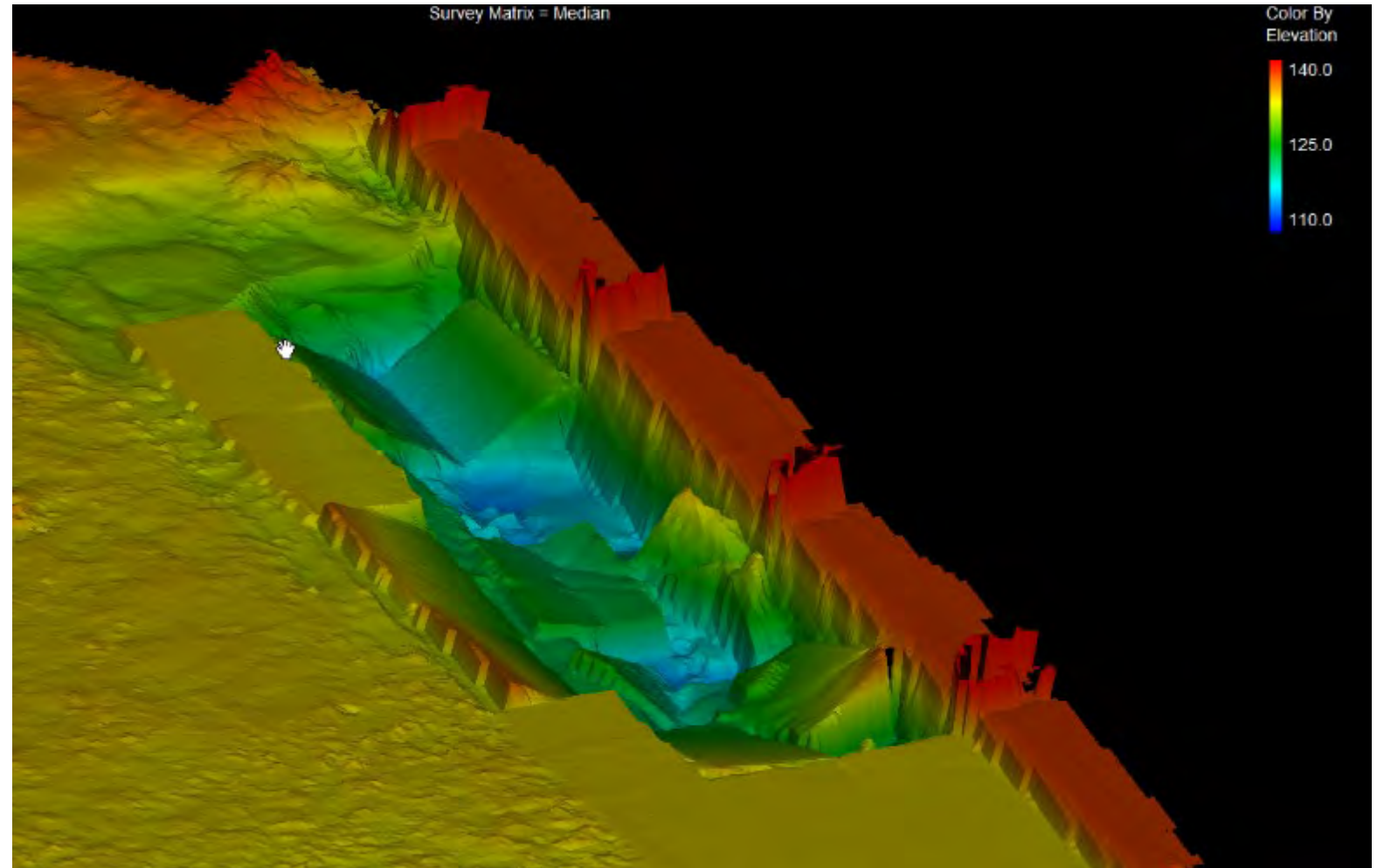
23



STENNIS SPILLWAY

June 2021 Barge Allision

- Loaded barge struck gate #2
- Barge sunk in front of gates #3, #4, and part of #5
- Structural damage to gate #2
- Extensive damage to concrete apron
- Scour damage downstream of spillway



Working Today to Build a Better Tomorrow

TENNESSEE-TOMBIGBEE WATERWAY

STENNIS SPILLWAY

- Temporary repairs to gate #2 have been completed
- Solicitation for new gate will be out soon
- Installation of new gate will be in summer after new gate is received





TENNESSEE-TOMBIGBEE WATERWAY

25



STENNIS SPILLWAY

- Temporary repairs to the upstream concrete apron were completed in 2021
- Permanent repairs to the upstream concrete apron are beginning this month
- The repair process will consist of layers of grouted rip-rap with a concrete cap on top
- Extensive use of the latest marine survey equipment will allow for high quality repair
- Permanent repair to concrete apron will be complete before the winter months



Working Today to Build a Better Tomorrow



TENNESSEE-TOMBIGBEE WATERWAY

26



ABERDEEN SPILLWAY



Working Today to Build a Better Tomorrow

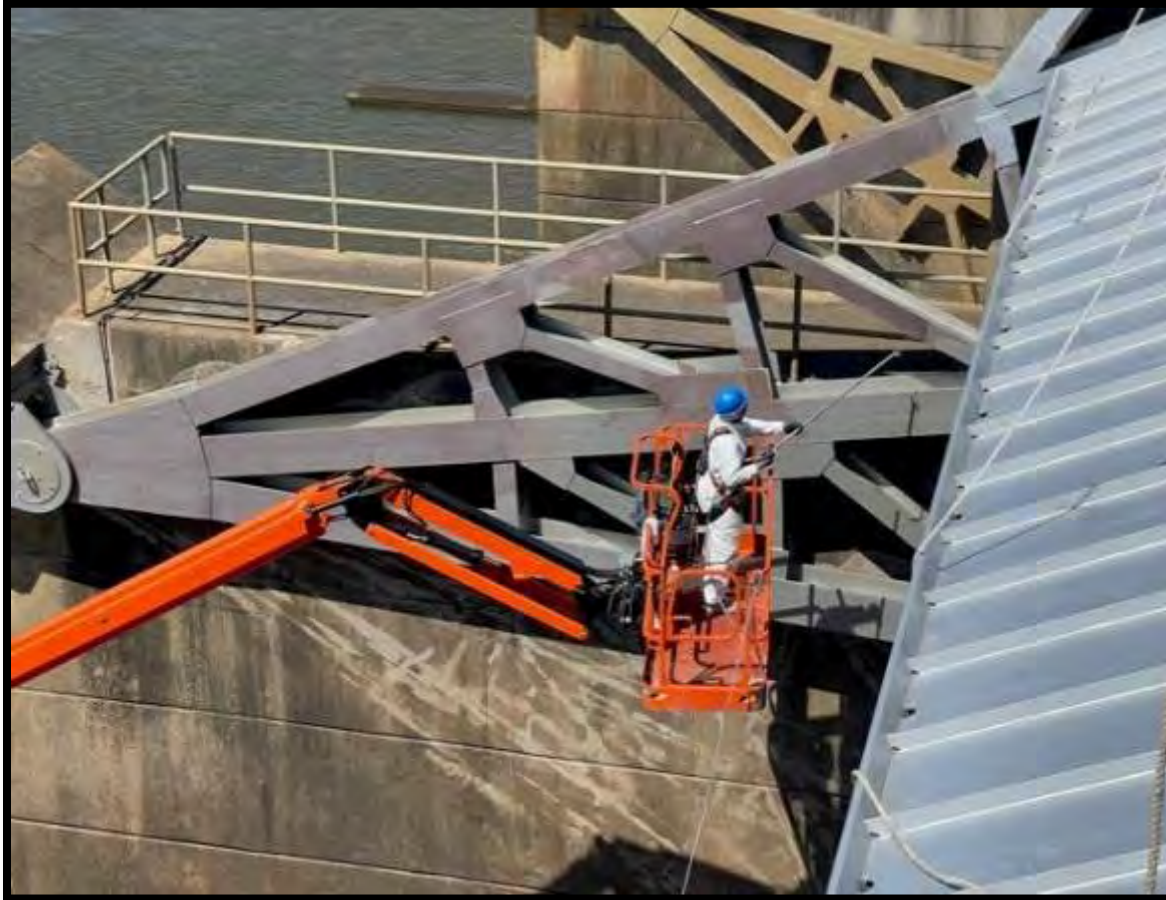


TENNESSEE-TOMBIGBEE WATERWAY

27



ABERDEEN SPILLWAY



Working Today to Build a Better Tomorrow



TENNESSEE-TOMBIGBEE WATERWAY

28



THAD COCHRAN LOCK



- WRDA 2020 included language to re-name Amory Lock for the late Senator Thad Cochran
- A re-naming ceremony was held in October of 2021

Working Today to Build a Better Tomorrow



TENNESSEE-TOMBIGBEE WATERWAY

29



TENNESSEE-TOMBIGBEE WATERWAY MANAGEMENT CENTER



- New Tennessee-Tombigbee Waterway Management Center
- EMR, Inc. – Niceville, FL
- Approximate Completion Date: January 2023

Working Today to Build a Better Tomorrow



TENNESSEE-TOMBIGBEE WATERWAY

30



LOCK CLOSURES

- No Lock Closures in 2022
- Tentatively – Wilkins and Cochran (Amory) will be closed in 2023 (30 Days)
- Whitten will be closed in 2024 (30 Days....Hopefully)



Working Today to Build a Better Tomorrow



TENNESSEE-TOMBIGBEE WATERWAY

31



QUESTIONS?



Working Today to Build a Better Tomorrow



US Army Corps
of Engineers®

32

ANTHONY PERKINS

OPERATIONS PROJECT MANAGER
BWT&AL RIVER WATERWAYS



2022 BWT MAINTENANCE DREDGING



- Current dredging contract with Inland Dredging Co. (18-24" Cutterhead pipeline dredge) ~ \$4M O&M
- Future dredging contract (18-24" cutterhead pipeline dredge) award early Aug ~ \$3.2M Sunflower Advanced Maintenance
- Dredging expected to begin on Lower BWT mid Aug
- Current significant areas of concern on lower BWT:
 - Sunflower Bar, mile 78.0
 - Singleton Bar, mile 86.0
 - St. Elmo, mile 95.5
 - Little McGrew Shoals, mile 105
 - Selden Lock Lower Approach
- *Additional dredging on Alabama River (18-24" cutterhead pipeline dredge) scheduled to begin mid Sep ~ \$8M



SELDEN LOCK LOWER APPROACH

Shoaling at lower approach to lock reported



- Corps floating plant Lawson/Choctawhatchee
- August 1-4, 2022
- Approx. 2,200 cy removed (9-1/2 barge loads)

Working Today to Build a Better Tomorrow



NOTABLE LOCK AND DAM MAINTENANCE WORK



- Continue to Replace Emptying/Filling Valves at Holt Lock (**no closure required, some delays possible**)
- Critical Spare Parts Acquisition - To Re-Stock Critical parts for Locks
- Coffeerville Spillway Repairs – Repair & Paint Spillway Gates and Machinery
- Demopolis Upper Miter Gate & Selden Spillway Gate “Design” – possible use of composite material
- Recently completed hydraulic pipe replacement at Demopolis Lock.
- **FY23 - New Lower Miter Gates at Coffeerville and Demopolis Locks (2 year Fabrication Duration and 30-day closure each to install)**
 - **In President’s Budget**

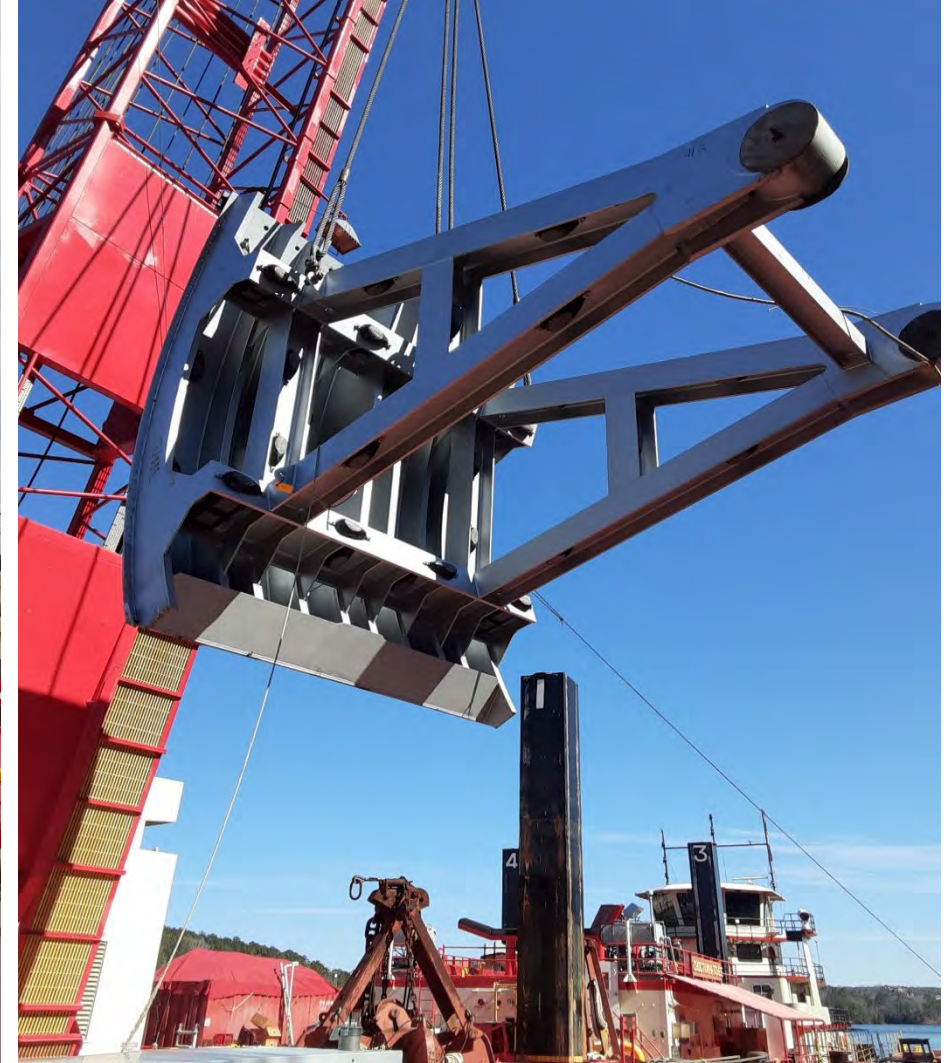


NEW HOLT LOCK VALVES – REPLACEMENT UPDATE

36



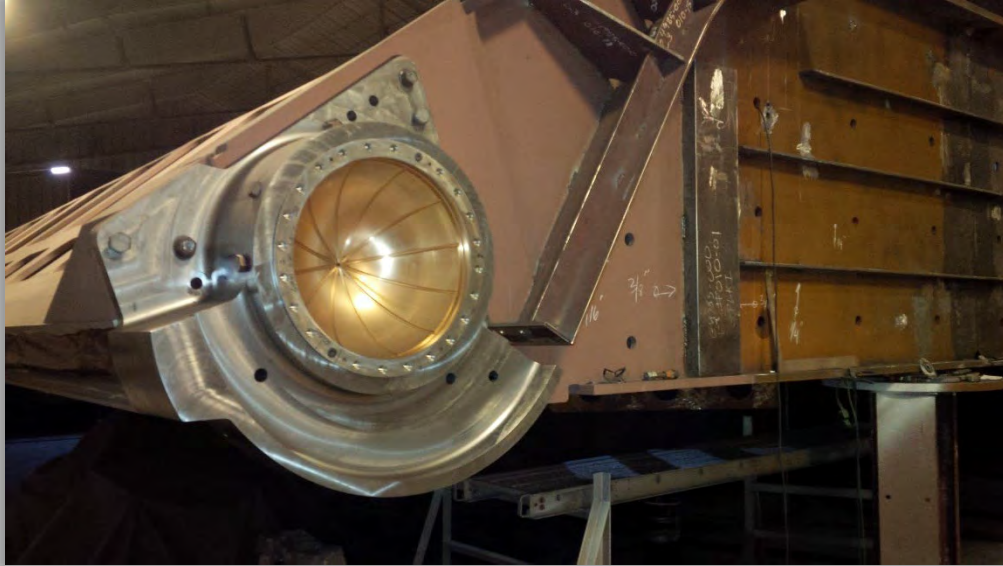
- Work performed by R&D Maintenance Services, O&M Contractor. Fabricated by G&G Steel in Russellville, AL
- Completed 1st of 4 new lock valves in Dec. 2021
- Will begin 2nd of 4 new valves soon; 2022



Crews are removing equipment from recently completed valve repairs at Bankhead Lock

Working Today to Build a Better Tomorrow

CRITICAL SPARE PARTS – RE-STOCK INVENTORY



- Pintle Socket
- Critical Component of a Miter Gate



- Failed vs. New Reaction Roller
- Critical component of Miter Gate Machinery





CRITICAL SPARE PARTS UTILIZED AT COFFEEVILLE LOCK 7-DAY LOCK CLOSURE TO REPLACE FAILED MITER GATE MACHINERY PART

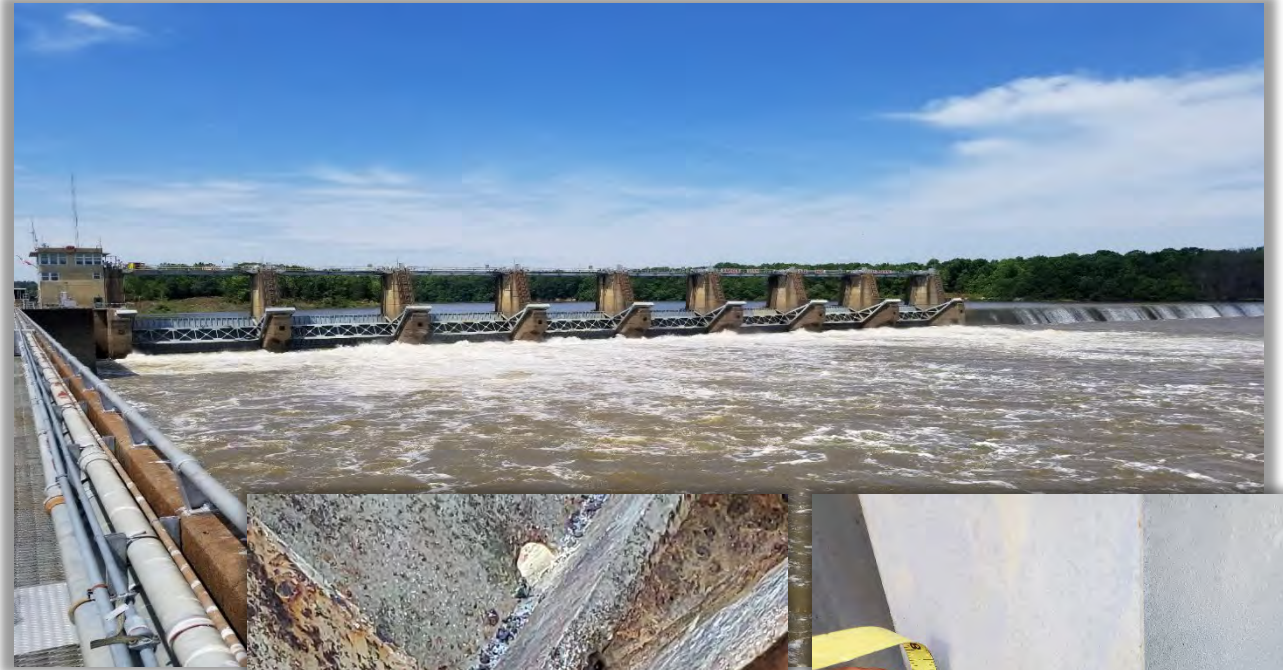
38



- Critical spare parts for the lock miter gate operating machinery (not off the shelf items with long lead times to fabricate).
- Re-stocking of spare parts to ensure availability for the future; reducing downtime if failures occur.
- **Update: Negotiating with Contractor – preparing to award**

Working Today to Build a Better Tomorrow

COFFEEVILLE SPILLWAY REPAIRS AND PAINTING



- Repair Spillway Gates and Machinery
- Paint Spillway Gates, Machinery, Deck
- Work started July 2022
- Severe corrosion identified in some areas requiring additional repairs





SELDEN SPILLWAY GATES AND DEMOPOLIS LOCK UPPER MITER GATE “COMPOSITE DESIGN”

40

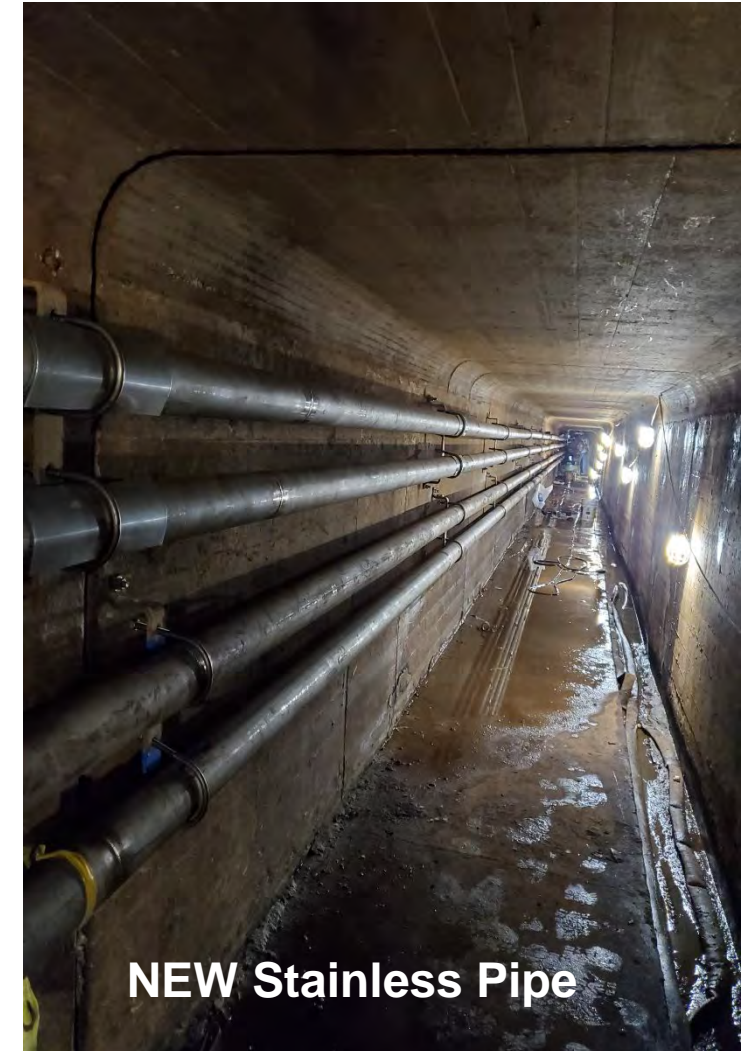


- Study/Design for new Selden Spillway Gates & Demopolis Upper Miter Gates utilizing **composite** material
- First Design Charrette Team Meeting: 08-12 August 2022



DEMOPOLIS LOCK – REPLACED DETERIORATED HYDRAULIC PIPE

41



Started : 08 June 2022

Work Complete : 20 July 2022

- Involved a couple of 2-day lock closures to complete.
- **All new pipe is stainless steel for long service life.**

Working Today to Build a Better Tomorrow

SCHEDULED 30-DAY LOCK CLOSURES

Black Warrior-Tombigbee Waterway:

- 2024 – Demopolis & Coffeeville Locks
 - **2025 – Demopolis Lock**
 - **2026/27 – Coffeeville**
- 2028 – Holt and Selden Locks
 - Can adjust if needed, based on Coffeeville Miter Gate Replacement

