



ALABAMA PORT AUTHORITY

PUBLIC SEAPORT TERMINALS OVERVIEW



Lower Harbor – 45 ft. Draft
Serving Larger Post Panamax Ships
Containers / Steel / Coal

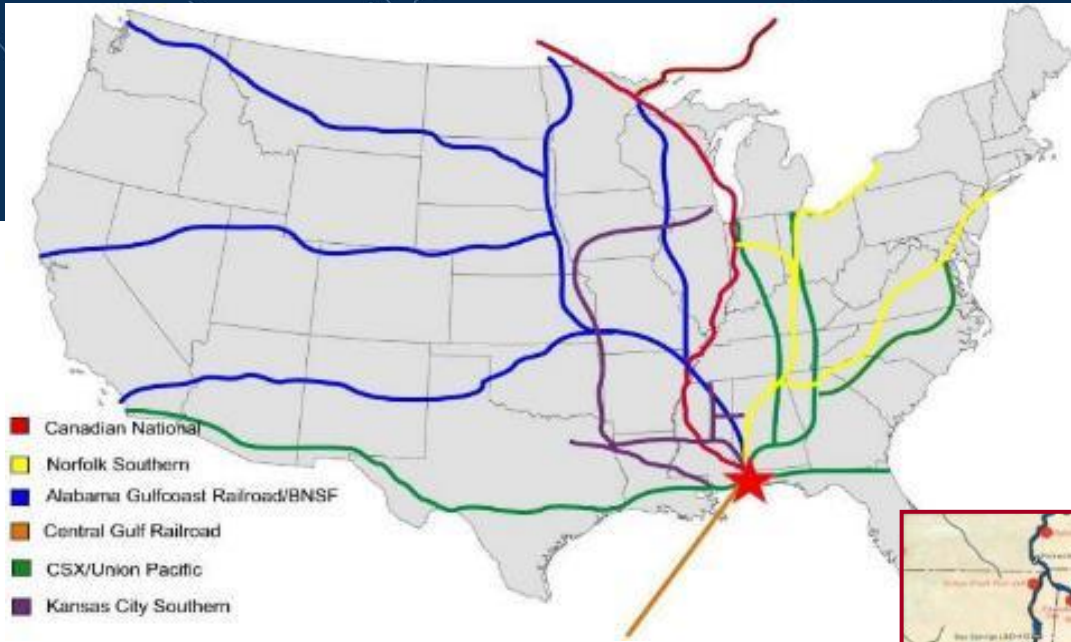
Intermodal Investments
Container Terminal / ICTF / Logistics

Upper Harbor – 40 ft. Draft
Serving Panamax Ships
Metals / Forest Products / Petroleum
Frozen Poultry / Grain / Coal

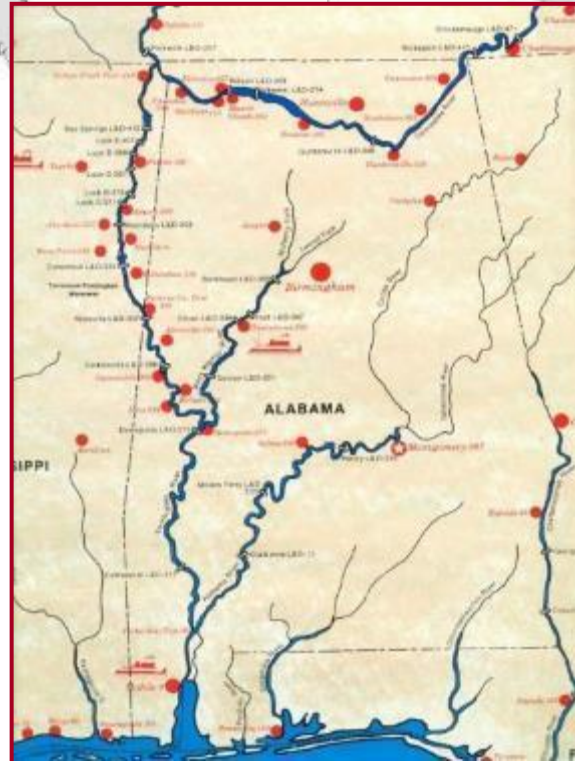
5 National Railroads
4 Short Line Railroads
Interstates / I-65 & I-10

Alabama's Inland
Waterways Via
Tennessee-
Tombigbee

Alabama's Seaport Transportation Assets



- 5 Class I Railroads / 9 Railroads
- Interstate Systems / US Highways
- Inland and Intracoastal Waterways



ALABAMA PORT AUTHORITY – HIGHLIGHTS


ESTABLISHED **1928**

 **\$139.8 MILLION**
REVENUE (FY20)

 **3,700** ACRES


154,447
DIRECT & INDIRECT JOBS

 **\$559.3 MILLION**
DIRECT & INDIRECT
TAX IMPACT


\$25.4 BILLION
TOTAL ECONOMIC VALUE

2020 CONTAINERS


424,476 TEUs

2020 TONNAGE

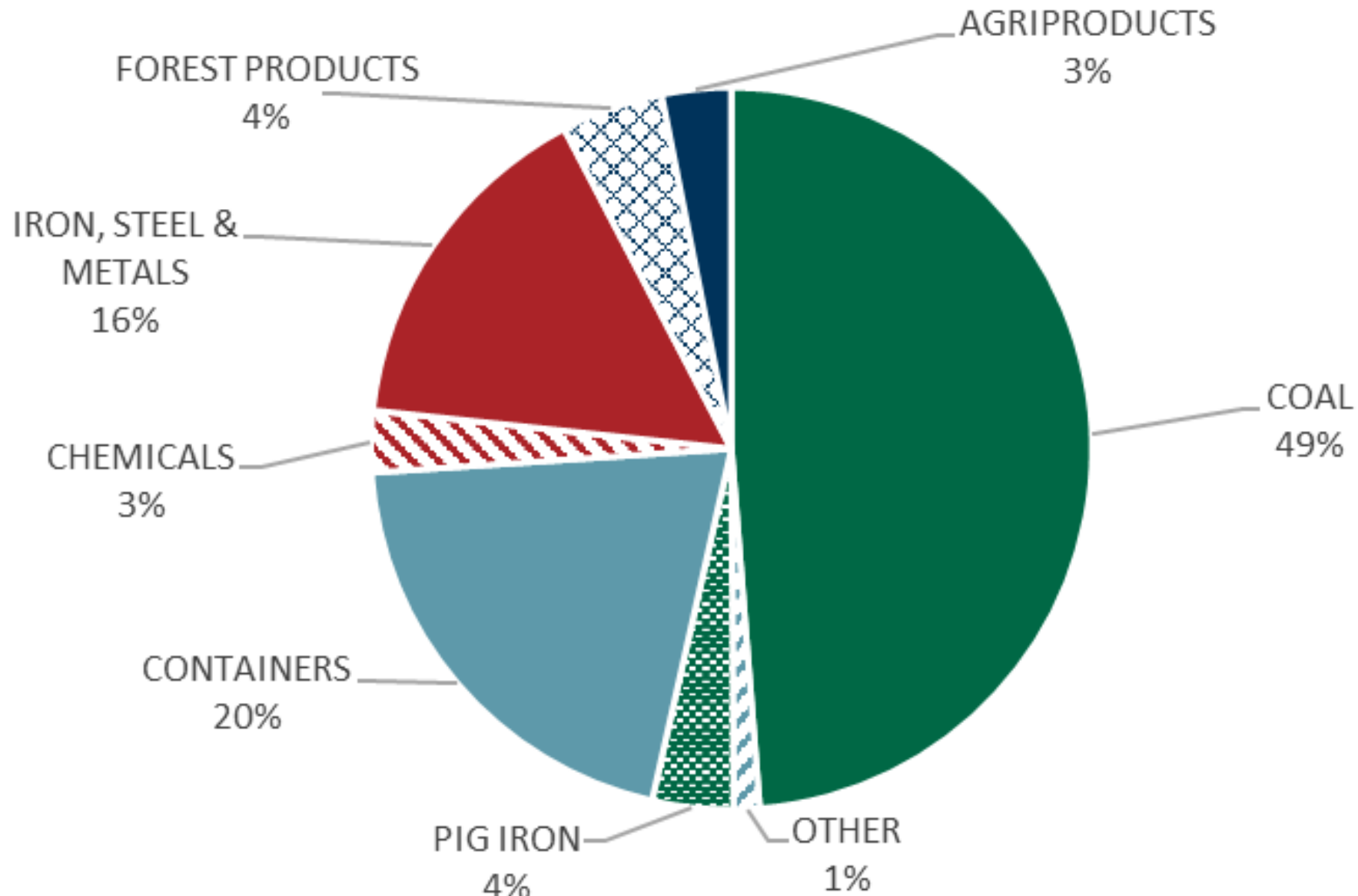

58 MILLION TONS

2020 RAIL CARS


165,059 RAIL CARS



COMMODITY BREAKDOWN – 2020



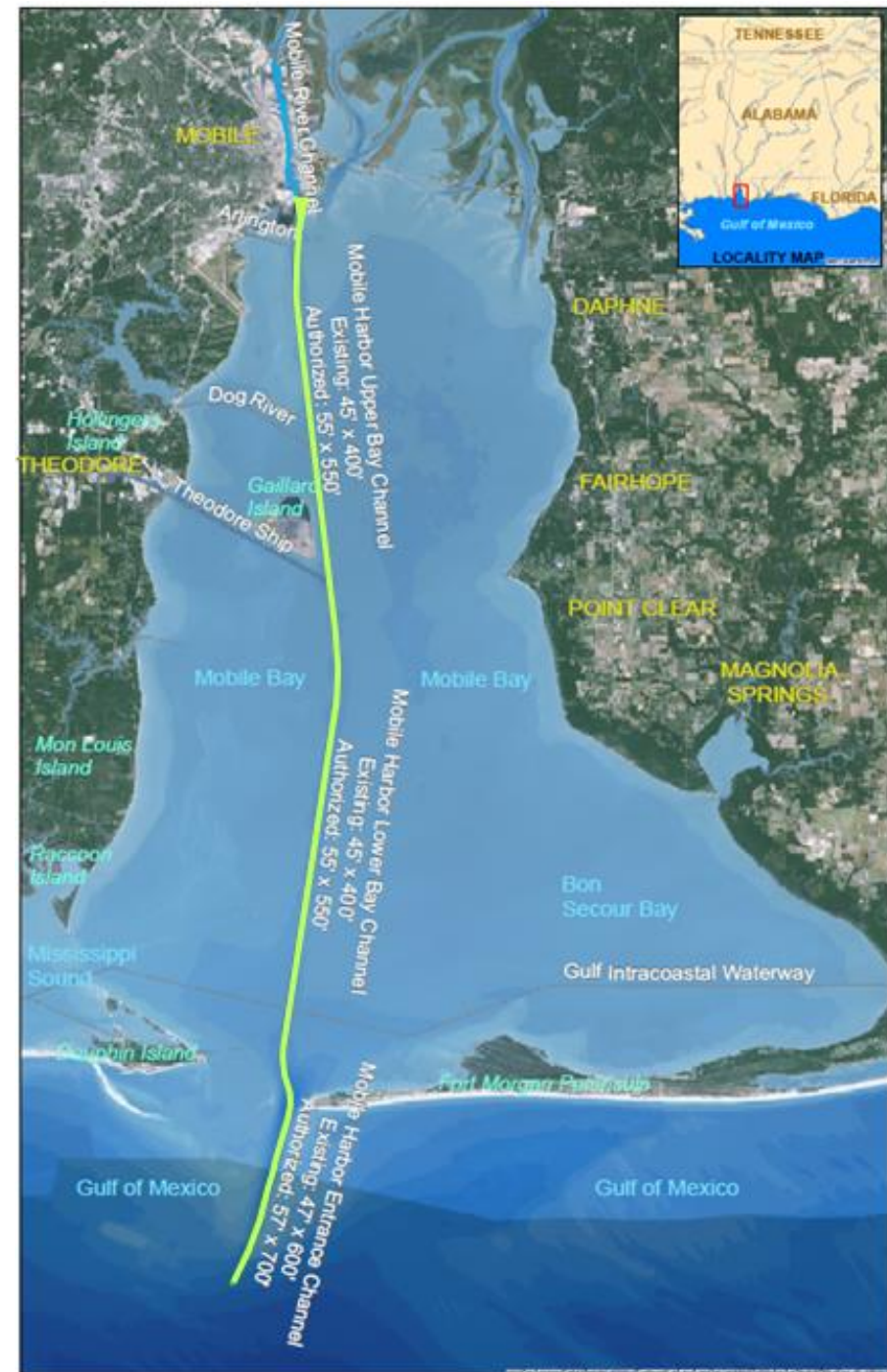
Alabama Coal



- Serving Alabama's Met Coal Market - Current Export Capacity 10 to 12 Million Tons
- Rehab #3 Barge Unloader \$1.5 Million Completed
- Replacement \$7.5 Million Stacker Reclaimer Operational in 15 Months
- \$45 Million, Phased Capital Plan to Expand and Enhance Export Coal Capacity to 15 to 20 Million Tons
 - ✓ Adds New Equipment
 - ✓ Rebuilds Existing Equipment
 - ✓ #2 Rail Unloader Under Contract

Alabama's Harbor Modernizing

- Current Dimensions – Year Round
 - ✓ 45 ft. (13.7 m) Deep
 - ✓ 400 ft. (121.9 m) Wide
- US Army Corps of Engineers Construction Underway
 - ✓ Two Construction Contracts Awarded
 - ✓ Full Federal and State Funding Secured – Thank you, Alabama for your support of the Rebuild Alabama Act
 - ✓ Project Completion by 2025
- Project Deepens Bar, Bay and River Channels and adds a Passing Lane
 - ✓ Depth of 50 ft. in Bay & River Channels
 - ✓ Depth of 52 ft. at the Bar Channel
 - ✓ Widen Bay Channel 3 mi. Length and 100 ft. Width
 - ✓ Bend Easing (Upper Bar Channel)
 - ✓ Turning Basin Improvement
- EST. PROJECT COSTS: \$366 MILLION
- Improves Vessel Safety and Efficiencies, Provides Economies of Scale to Shippers



Planned Capital Investments



General Cargo

Targeting \$130 million to rehabilitate wharves

Multi-phase program to improve commodity load demands, service levels and safety

Funds through competitive grants, P3s

Services Iron & Steel, Forest Products, Project Cargoes



Containers Intermodal

Targeting up to \$80 million for Container Yard and Berth Expansions

Multiphase program to increase container and ocean carriage capacity needs on new 50 ft. channel

Development of a container volume driven logistics park

Funds through competitive grants, P3 opportunities



Freight & Container Intermodal Rail

Targeting \$68 million in freight and container intermodal improvements, including a new facility at Montgomery

Support railed cargo growth and increasing traffic from 5 Class 1 and 3 Regional Railroads

Logistics Park Development

ASPA Strategic Focus: cargo velocity and to drive incremental over-the-docks cargo



- Approx. 124 acres Adjacent the ICTF
- Direct access to I-10 and I-65
- Potential Freight Rail Service
- Demonstration Program

Montgomery Inland Intermodal Container Transfer Facility



- Phase I is an Est. \$54 Million Project
- Public / Private Investment
- Provides Regional Shipper Transportation Efficiencies Between Alabama's Port and Montgomery
- These Type of Assets Attract Manufacturing, Distribution and Logistics Investments



ASPA ICTF at Mobile – A similar design slated for Montgomery

CONNECTIVITY

INVESTMENT

GROWTH



Alabama State Port Authority

Tennessee Tombigbee Waterway Association

August 12, 2021

THANK YOU!

John C. Driscoll
Director & Chief Executive Officer
251-441-7200
jdriscoll@asdd.com

